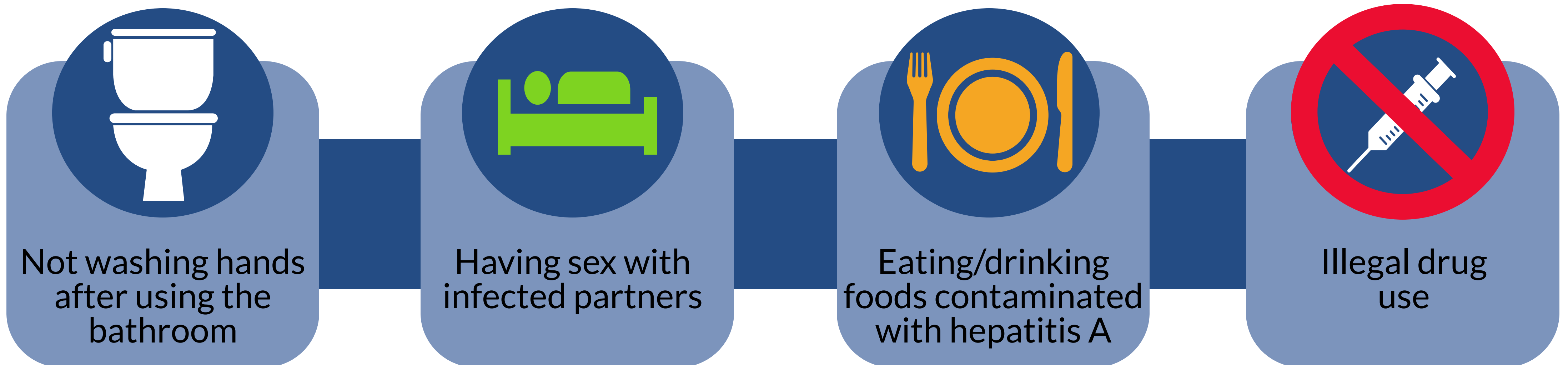


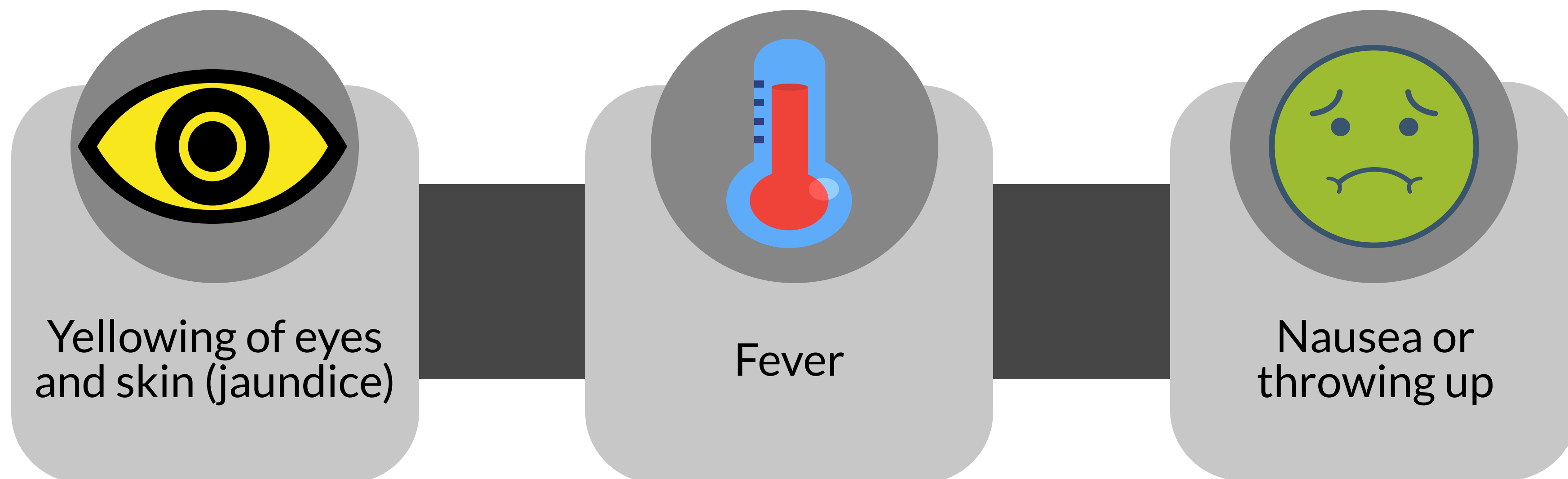


How Is It Spread?



It can also be spread through close contact with someone infected with hepatitis A.

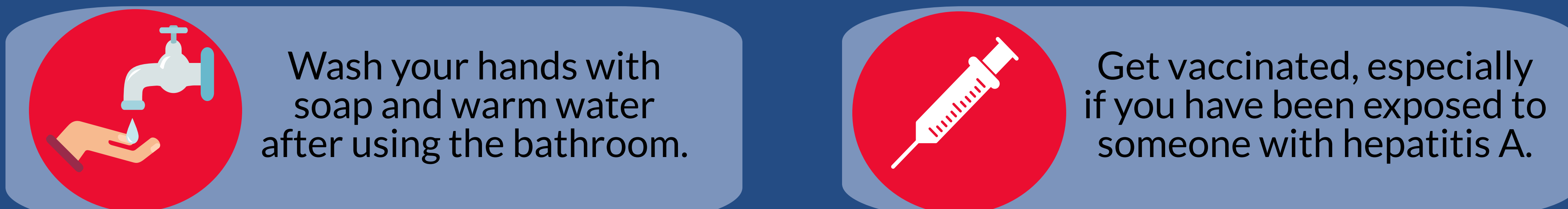
What Are The Symptoms?



Other symptoms include: dark pee, pale poop, stomach pain, feeling tired or loss of appetite.

If you have symptoms, see your doctor.

How Do I Prevent The Spread of Hepatitis A?



Who Is At High Risk?

- People who use illegal drugs
- People currently homeless or in transient living
- People recently in jail or prison
- People with underlying liver disease
- Men who have sex with men

Please contact your health care provider, or call Clermont County Public Health at (513) 735-8400 for additional information or to schedule an appointment for the hepatitis A vaccine.